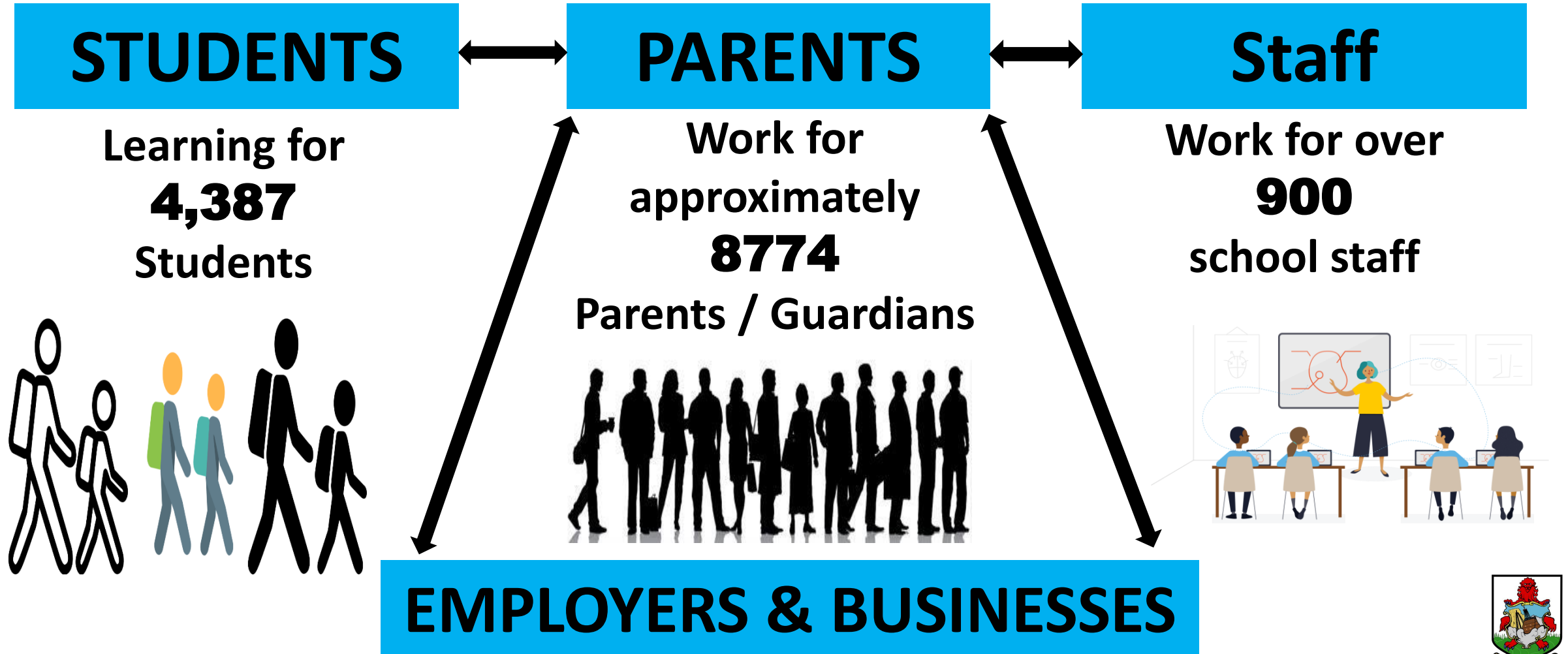




MINISTRY OF EDUCATION
Department of Education

Why Schools Can Remain Open With a COVID-19 Development

The decision to close schools affects, distresses and disrupts the ecosystem consisting of...



Current Status with COVID-19 Exposure at Public Schools as of March 21st, 2021



1 out 10
Preschools



5 out 18
Primary Schools



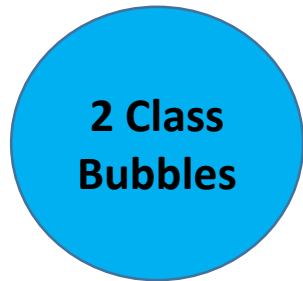
2 out 4
Middle Schools



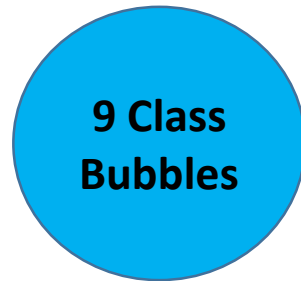
0 out 2 Senior
Schools



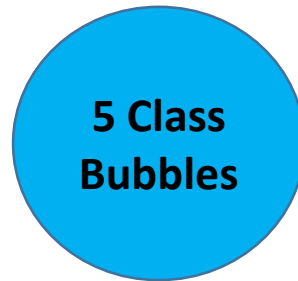
0 out 2
Special School & Alt
Programme



2 Class
Bubbles



9 Class
Bubbles



5 Class
Bubbles

**8 out 36 School Sites
Impacted**



Number of Schools Days Remaining Until Easter Break Begins

Monday	Tuesday	Wednesday	Thursday	Friday
22	23	24	25	26
29	30	31	1 PUBLIC SCHOOLS CLOSE AT 2:00PM FOR PD	2 GOOD FRIDAY

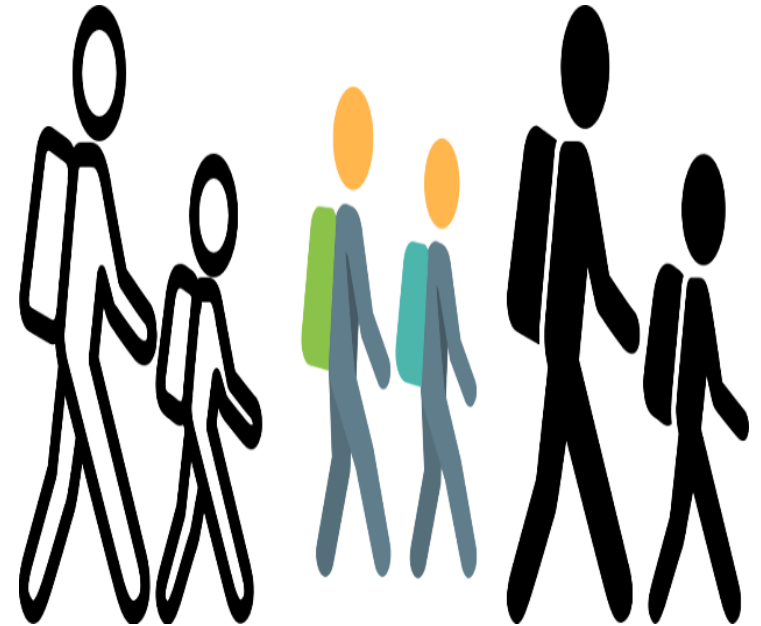
**8.33
Days
Remain**



Department of Health's Goal



Keep Schools Open for
Learning



Aligns with what is
best for **Children**



WHAT **WE** KNOW

1. COVID-19 is “not going anywhere”
2. Following all health and safety measures can reduce community transmission and spread
3. All School Staff (Public and Private) are considered essential staff for vaccinations
4. The number of persons with vaccines is increasing every day
5. Schools have safety protocols to mitigate and reduce spread
6. The best learning for children takes place onsite in classrooms
7. Learning is reduced when schools are closed



WHAT **WE** KNOW CONT'D

8. Students do not receive adequate services when schools are closed
9. The most vulnerable students are disadvantaged when schools close
10. Parents and guardians need to work
11. Businesses need to be open to help the economy improve
12. The Department of Health (DOH) is ably leading the island through the pandemic
13. The DOH has a plan for managing COVID-19 exposure in schools
14. We know the plan has proven to be effective



Why Schools Are Able to Remain Open

1	2	3	4
<p>When COVID-19 exposure occurs in schools, the “bubble” quarantines instead of the whole school and a risk assessment is carried out.</p>	<p>Teachers quarantine with the students in their “bubble” and this lessens the impact on staffing levels. These individuals are tested via the nasal-pharyngeal or oral swab.</p>	<p>The remaining school staff and students are tested using the saliva testing method to help reassure of no spread or to catch any further spread.</p>	<p>Schools are able to remain open while quarantined staff and students engage in remote learning.</p>



Remote Learning Considerations During COVID 19

1. Health will continue managing COVID-19 developments at schools and Education will follow the guidance from Health.
2. Health will continue using risk assessment data to determine if a class, year level or school with COVID-19 exposure needs to quarantine.
3. Transition to remote learning for any school will occur only if the risk assessment data indicates the need to do so.
4. Education will monitor daily staffing levels and use this data as well to determine if a school transitions to remote learning.
5. Health will soon launch a website about COVID-19 developments in Bermuda's public and private schools for all to access.

